



SHARJAH CITY MUNICIPALITY

بلدية مدينة الشارقة





FOOD CONTROL SECTION

قسم رقابة الأغذية

IMPORTED FOOD INSPECTION PROCEDURES





Director General of Sharjah City Municipality

Assistant Director-
General for the
Customer Service
Sector

Assistant Director-
General for the
Public Health and
Central Labs Sector

Assistant Director-
General for the
Agriculture &
Environment Sector

Assistant Director-
General for the
Engineering &
Projects Sector

Assistant Director-
General for the
Corporate Support
Sector

Central Laboratories
Management

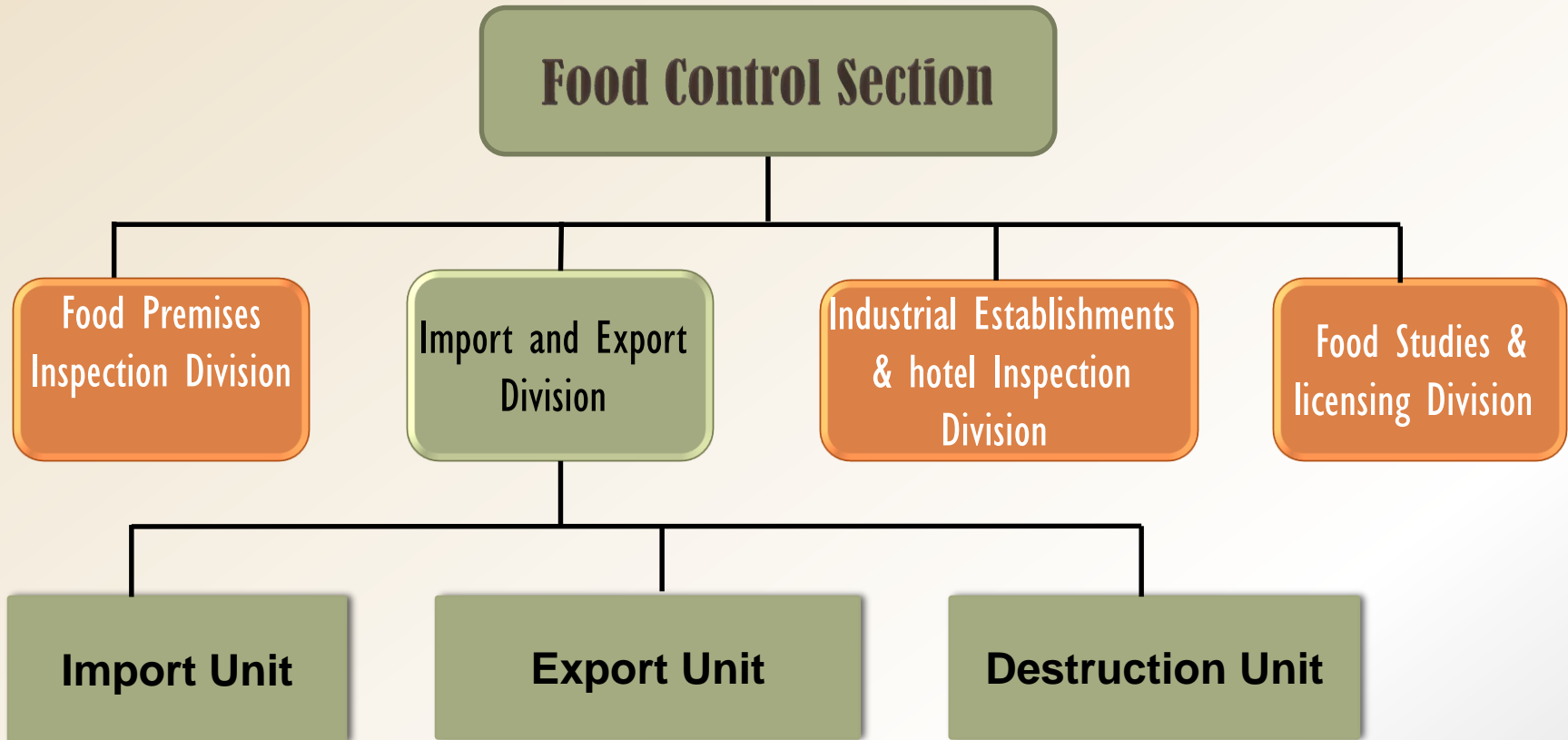
Department Of Public
Health

Health Control
Section

Veterinary
Services Section

Food Control
Section

Health Clinic
Section





MISSION

- **The Food Safety Authority of Sharjah strives to be a regional leader and trusted voice in farm to table food safety.**
- **The mission of the approach is to protect and improve the health of consumers by assuring foods are safe, and facilitating food trade.**



ACCREDITATION

The Food Control Section of the Sharjah Municipality was the first inspection body in U.A.E. accredited with the international ISO / IEC 17020 since 2009 in 4 scope of its function, one of these Food Import in Khalid Seaport.

Certificate of Accreditation

بلدية الشارقة، قسم رقابة الأغذية (NAI-004) Sharjah Municipality, Food Control Inspection Section
الناهرية - الشارقة - الإمارات العربية المتحدة (Nasiriya, Sharjah, UAE)

حاصل على الاعتماد في مجال "التفتيش على الأغذية وفق الأنسطة المذكورة في وثيقة المجال المرفقة" وفقاً لمتطلبات النولية: ISO/IEC 17020:
Accredited according to ISO/IEC 17020 to undertake inspections in the field(s) of "Food, as per attached Methods"

تاريخ منح الاعتماد Initially Accredited On 2009/11/11
تاريخ الإنهاء Expires On 2019/01/17

الدكتور راشد أحمد بن فهد
وزير الصحة والمياه
رئيس مجلس إدارة هيئة الإمارات للمواصفات والمقاييس



Accreditation in accordance with the requirements of ISO/IEC 17020:2012
"requirements for the operation of various types of bodies performing inspections" &
the relevant ENAS & IAC / IAF guidelines.
This certificate is invalid without the attached scope of accreditation and shall remain
valid until the expiration date above, subject to continuing compliance with the
requirements of the accreditation system.

1 وفقاً لمتطلبات المواصفة الدولية ISO/IEC 17020:2012 "تطوير العامة لتشغيل مختلف أنواع الهيئات القائمة
بالتفتيش" والأئلة ذات العلاقة الخاصة بالتفتيش الوطني للاعتماد IAF والأنظمة الدولية لاعتماد الهيئات IAC للقيام
بالأنشطة الواردة في وثيقة المجال
يعتبر هذه الشهادة صالحة وقابلة للتحديث وإعادة الإصدار حتى تاريخ الانتهاء الذي أعلاه كوسيلة استمرار الصية المذكورة
إلا في تطبيق متطلبات المواصفات والأئلة سالفة الذكر. وتتحمل الجهة مسؤولة الشهادة الصادرة عنها، وتلتزم بمعايير
الاعتماد المذكورة في وثيقة المجال المرفقة لتعملات متابعة لاعتماد من قبل نظام الاعتماد الوطني.



IMPORT INSPECTION PROCEDURE

This procedure is designated for consumer protection as required by local and international standards and regulations for protection against food items found physically or analytically unfit for human consumption due to bacteriological or chemical contamination to be rejected entry into UAE.



IMPORT INSPECTION PROCEDURE

Documentation pre-requisite for entry of food shipments on arrival at Sharjah Ports:

- ***Bill of Entry / AWB.***
- ***Customs Inspection Report (if applicable).***
- ***Packed products list.***
- ***Health Certificate of the consignment issued by government or local Health authority in country of origin***
- ***Certificate of Origin.***



IMPORT INSPECTION PROCEDURE

Documentation pre-requisite for entry of food shipments on arrival at Sharjah Ports:

- *Halal Certificate issued by an Islamic organization in the country of origin recognized and approved by UAE government (for meat and meat products).*
- *Original Phytosanitary Certificate (for vegetables, fruits and grains).*
- *Additional Certificates or declarations.*



IMPORT INSPECTION PROCEDURE

Other pre-requisites for release of consignments, not essentially requiring analytical examination:

- *Passing physical inspection, which indicates a physically sound product,*
- *Correct documentation,*
- *Compliance of labeling and dating with legislation and satisfying afore-mentioned requirements.*



IMPORT INSPECTION PROCEDURE

Inspection of food containers in the Sharjah ports:-

As a rule, all cases of container inspection, the inspection should be held in presence of company clearance agent (PRO).

1. Checking the required documents and labels.

2- Assessing the environmental conditions, in cases of conditions may cause risk of contaminating of the food items (such as sand storm, wind storm, rain, extreme heat, etc.) container should be released for further inspection in client warehouses. (Sharjah Emirate Companies Only)



IMPORT INSPECTION PROCEDURE

Inspection of food containers in the Sharjah ports:-

As a rule, all cases of container inspection, the inspection should be held in presence of company clearance agent (PRO).

3. Checking the cleanliness and damages of container.

4. Checking the temperature degrees of container using a calibrated thermometer.



IMPORT INSPECTION PROCEDURE

Inspection of food containers in the Sharjah ports:-

As a rule, all cases of container inspection, the inspection should be held in presence of company clearance agent (PRO).

6. Checking the physical fitness, labels and validity of food products.

7. Collecting samples for lab analysis. (if applicable)



IMPORT INSPECTION PROCEDURE

Further Inspection of Consignments into Sharjah Emirate:

The consignments will be released for further inspection into Sharjah Emirate food companies warehouses in the following conditions:-

- 1- The food inspector could not find all food items mentioned in the Packing List at the time of inspection.***
- 2- Environmental conditions (Temperatures, Winds, Humidity, Dusts) are not appropriate for inspection.***



IMPORT INSPECTION PROCEDURE

Further Inspection of Consignments into Sharjah Emirate:

The consignments will be released for further inspection into Sharjah Emirate food companies warehouse in the following conditions:-

- 3- The consignments intended use for processing purposes in food factories.***
- 4- The container is jammed.***



IMPORT INSPECTION PROCEDURE

Transferring of Consignments to others Emirates:-

For other Emirates food companies, the consignments will be transferred to others emirates authorities in the following conditions:-

- 1- The consignee requests the transferring procedure.***
- 2- The food inspector could not found all food items mentioned in the Packing List at the time of inspection.***



IMPORT INSPECTION PROCEDURE

Transferring of Consignments to others Emirates:-

For other Emirates food companies, the consignments will be transferred to others emirates authorities in the following conditions:-

- 3- Environmental conditions (Temperatures, Winds, Humidity, Dusts) are not appropriate for inspection.***

- 4- When Laboratory analysis is required.***



IMPORT INSPECTION PROCEDURE

Transferring of Consignments to others Emirates:-

For other Emirates food companies, the consignments will be transferred to others emirates authorities in the following conditions:-

5- The container is jammed.

6- The documents required are incomplete.



New Food Control Section Office in Khalid Seaport





New Food Control Section Office in Khalid Seaport

New food control section office was established in Khalid seaport, shade No. 4, which allow inspection process for food containers to be held on the ramp inspection area. This is one of developments plan to make food consignments inspection more easier and safer, and on the other hand it will also minimize the clearing time for consignee.



Thank you